



## Seat Tarraco

Standard Safety Equipment

2019



### Adult Occupant



97%

### Child Occupant



84%

### Vulnerable Road Users



79%

### Safety Assist



79%

## SPECIFICATION

Tested Model	SEAT Tarraco 1.5 TSI R4, LHD
Body Type	- Large SUV
Year Of Publication	2019
Kerb Weight	1524kg
VIN From Which Rating Applies	- all Tarracos
Class	Large Off-Road 4x4

## SAFETY EQUIPMENT

	Driver	Passenger	Rear
FRONTAL CRASH PROTECTION			
Frontal airbag	●	●	✗
Belt pretensioner	●	●	●
Belt loadlimiter	●	●	●
Knee airbag	●	✗	✗
SIDE CRASH PROTECTION			
Side head airbag	●	●	●
Side chest airbag	●	●	✗
Side pelvis airbag	✗	✗	✗



## SAFETY EQUIPMENT (NEXT)

	Driver	Passenger	Rear
CHILD PROTECTION			
Isofix	—	●	●
Integrated CRS	—	✗	✗
Airbag cut-off switch	—	●	—
SAFETY ASSIST			
Seat Belt Reminder	●	●	●

OTHER SYSTEMS	
Active Bonnet (Hood)	✗
AEB Pedestrian	●
AEB Cyclist	●
AEB City	●
AEB Inter-Urban	●
Speed Assistance System	●
Lane Assist System	●

**Note:** Other equipment may be available on the vehicle but was not considered in the test year.

- Fitted to the vehicle as standard    ○ Fitted to the vehicle as part of the safety pack  
 ○ Not fitted to the test vehicle but available as option or as part of the safety pack    ✗ Not available    — Not applicable





ADULT OCCUPANT

Total 37.1 Pts / 97%



GOOD



ADEQUATE



MARGINAL



WEAK



POOR

Frontal Offset Deformable Barrier

7.7 / 8 Pts



Passenger



Driver

Frontal Full Width

7.8 / 8 Pts



Rear Passenger



Driver

Whiplash Rear Impact

1.6 / 2 Pts



Front seat



Rear seat

Lateral Impact

16 / 16 Pts



Car



Pole





ADULT OCCUPANT

Total 37.1 Pts / 97%



GOOD



ADEQUATE



MARGINAL



WEAK



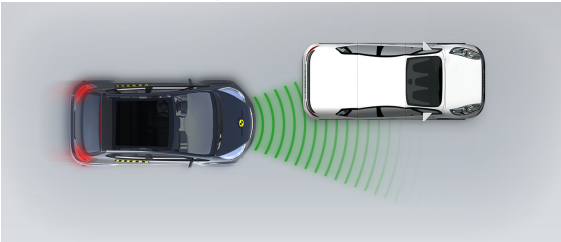
POOR

AEB City

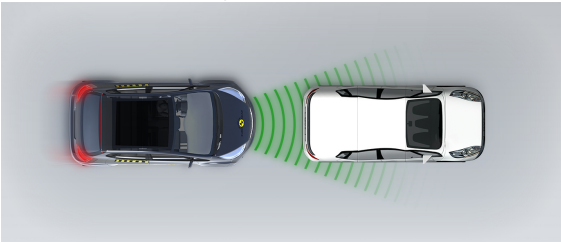


4 / 4 Pts

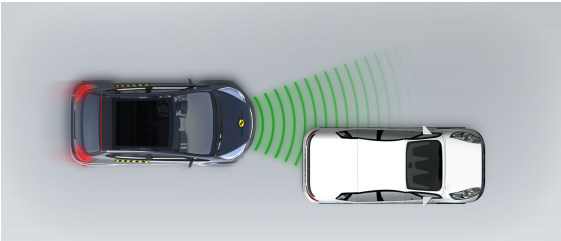
Approaching a stationary car: Left Offset



Approaching a stationary car: No Offset



Approaching a stationary car: Right Offset





## CHILD OCCUPANT

Total 41.6 Pts / 84%

GOOD ADEQUATE MARGINAL WEAK POOR

Crash Test Performance based on 6 &amp; 10 year old children

23.9 / 24 Pts

Frontal Impact

15.9 Pts



Lateral Impact

8 Pts



Restraint for 6 year old child: *Römer KidFix XP*  
 Restraint for 10 year old child: *Römer KidFix XP*

Safety Features

7 / 13 Pts

	Front Passenger	2nd row outboard	2nd row center	3rd row outboard *
Isofix	●	●	✗	✗
i-Size	●	●	✗	✗
Integrated CRS	✗	✗	✗	✗

\* Third row seats available as option

● Fitted to test car as standard    ○ Not on test car but available as option    ✗ Not available

CRS Installation Check

10.7 / 12 Pts

● Install without problem    ○ Install with care    ● Safety critical problem    ✗ Installation not allowed

### i-Size CRS

Maxi Cosi 2way Pearl &amp; 2wayFix (rearward) (iSize)



Maxi Cosi 2way Pearl &amp; 2wayFix (forward) (iSize)



BeSafe iZi Kid X2 i-Size (iSize)





## CHILD OCCUPANT

Total 41.6 Pts / 84%

### ■ ISOFIX CRS

Maxi Cosi Cabriofix &amp; FamilyFix (ISOFIX)



BeSafe iZi Kid X4 ISOfix (ISOFIX)



Britax Römer Duo Plus (ISOFIX)



Britax Römer KidFix XP (ISOFIX)



### ■ Universal Belted CRS

Maxi Cosi Cabriofix (Belt)



Maxi Cosi Cabriofix &amp; EasyBase2 (Belt)



Britax Römer King II LS (Belt)



Britax Römer KidFix XP (Belt)







## CHILD OCCUPANT

Total 41.6 Pts / 84%

	Seat Position					
	Front	2nd row			3rd row	
	PASSENGER	LEFT	CENTER	RIGHT	LEFT	RIGHT
Maxi Cosi 2way Pearl & 2wayFix (rearward) (iSize)	●	●	□	●	□	□
Maxi Cosi 2way Pearl & 2wayFix (forward) (iSize)	●	●	□	●	□	□
BeSafe iZi Kid X2 i-Size (iSize)	●	●	□	●	□	□
Maxi Cosi Cabriofix & FamilyFix (ISOFIX)	●	●	□	●	□	□
BeSafe iZi Kid X4 ISOfix (ISOFIX)	●	●	□	●	□	□
Britax Römer Duo Plus (ISOFIX)	●	●	□	●	□	□
Britax Römer KidFix XP (ISOFIX)	●	●	□	●	□	□
Maxi Cosi Cabriofix (Belt)	●	●	●	●	●	●
Maxi Cosi Cabriofix & EasyBase2 (Belt)	●	●	✗	●	●	●
Britax Römer King II LS (Belt)	●	●	●	●	●	●
Britax Römer KidFix XP (Belt)	●	●	●	●	●	●

● Install without problem  
 ● Install with care  
 ● Safety critical problem  
 ✗ Installation not allowed





VULNERABLE ROAD USERS

Total 38.0 Pts / 79%

GOOD ADEQUATE MARGINAL WEAK POOR

Pedestrian Impact Protection

26.9 / 36 Pts



Head Impact	14.9 Pts
Pelvis Impact	6 Pts
Leg Impact	6 Pts

Vulnerable Road Users

11.1 / 12 Pts





## VULNERABLE ROAD USERS

Total 38.0 Pts / 79%

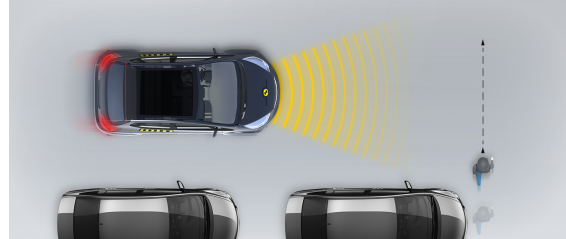
## AEB Pedestrian

## ■ Day time

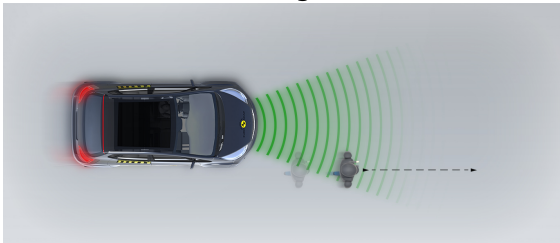
Adult crossing the road



Child running from behind parked vehicles

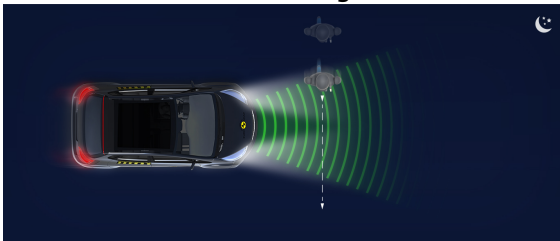


Adult along the roadside

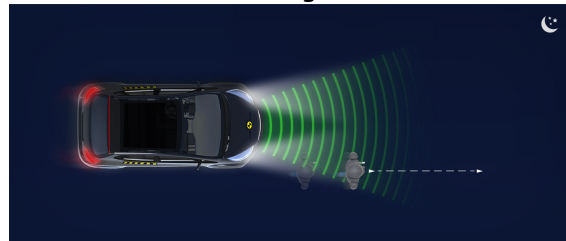


## ■ Night time

Adult crossing the road

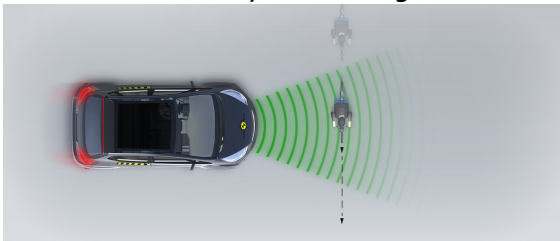


Adult along the roadside

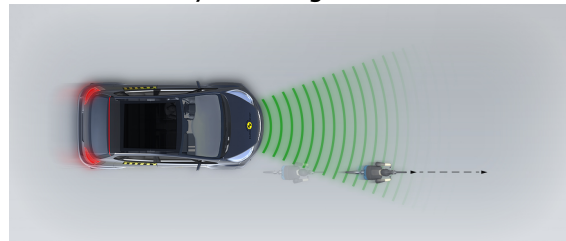


## AEB Cyclist

Cyclist crossing



Cyclist along the roadside







## SAFETY ASSIST

Total 10.3 Pts / 79%

 GOOD


 ADEQUATE

 MARGINAL

 WEAK

 POOR









## Speed Assistance



 1.3 / 3 Pts

System Name	SEAT Speed Limiter
Speed Limitation Function	Manually set (accurate to 5km/h)


## Seat Belt Reminder




 3 / 3 Pts

Applies To	Not available		
Warning	Driver Seat	front passenger(s)	rear passenger(s)
Visual			
Audible			
Occupant detection	—		

 Pass
  Fail
 — Not available

## Lane Support

 3.5 / 4 Pts

System Name	Lane Assist
Type	LKA
Operational From	60 km/h
PERFORMANCE	
Emergency Lane Keeping	 GOOD
Lane Keep Assist	 GOOD
Human Machine Interface	 ADEQUATE





SAFETY ASSIST

Total 10.3 Pts / 79%

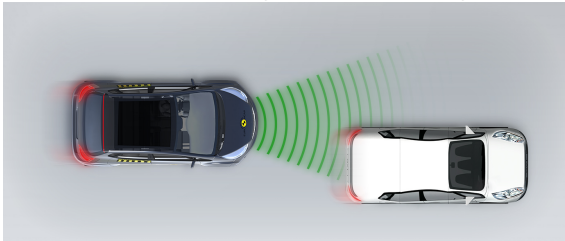
AEB Interurban

2.6 / 3 Pts

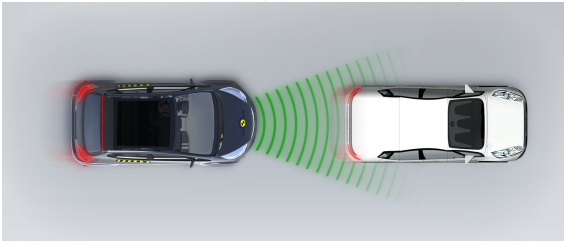
System Name	Front Assist
Type	Autonomous Emergency Braking and Forward Collision Warning
Operational From	10 km/h
Additional Information	Supplementary warning

■ Autobrake function only

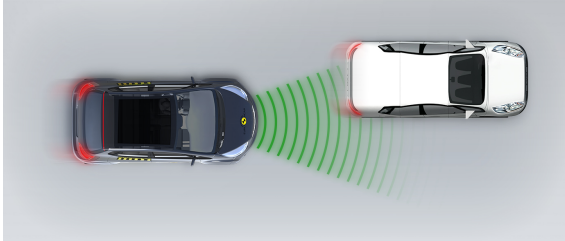
Approaching a slower moving car



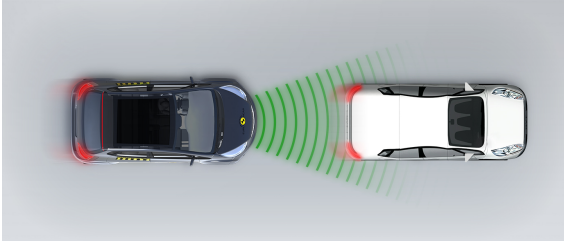
Approaching a slower moving car



Approaching a slower moving car



Approaching a braking car





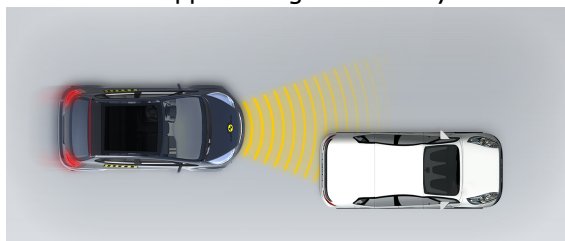


## SAFETY ASSIST

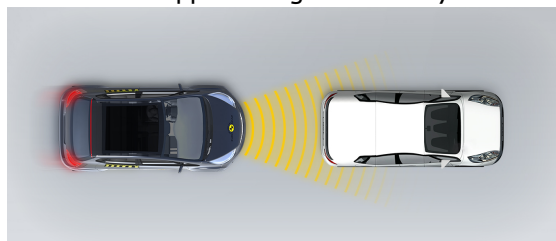
Total 10.3 Pts / 79%

## ■ Driver reacts to warning

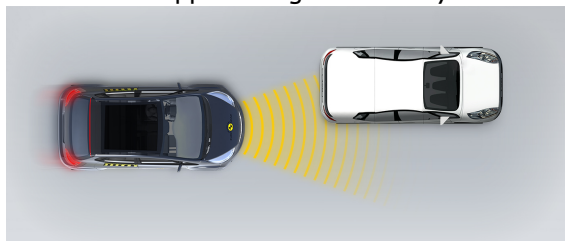
Approaching a stationary car



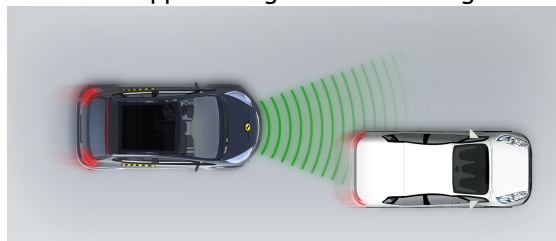
Approaching a stationary car



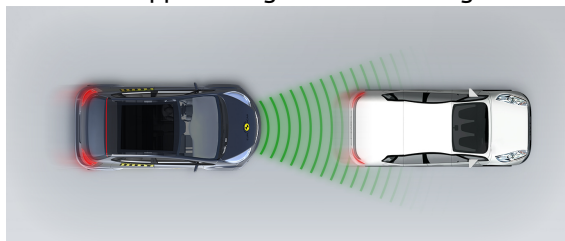
Approaching a stationary car



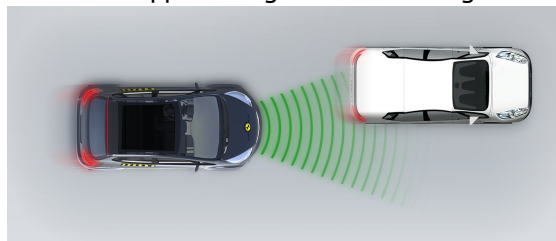
Approaching a slower moving car



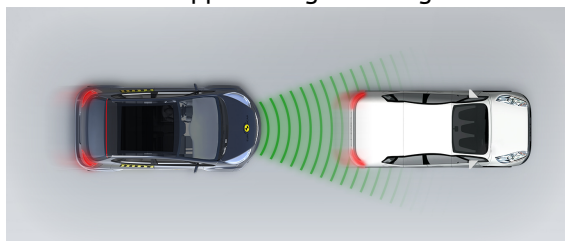
Approaching a slower moving car



Approaching a slower moving car



Approaching a braking car





RATING VALIDITY

Variants of Model Range

Body Type	Engine	Drivetrain	Rating Applies	
			LHD	RHD
5 door SUV	1.5 petrol*	4 x 2	✓	✓
5 door SUV	2.0 petrol	4 x 4	✓	✓
5 door SUV	2.0 diesel	4 x 2	✓	✓
5 door SUV	2.0 diesel	4 x 4	✓	✓

\* Tested variant

Annual Reviews and Facelifts

Date	Event	Outcome	
February 2019	Rating Published	2019 ★ ★ ★ ★ ★	✓